

A close-up photograph of an astronaut's leg in a white spacesuit, wearing a blue and black boot. The boot is stepping onto the grey, cratered surface of the moon. A clear impression of the boot's tread is visible in the lunar dust. The background is a dark, starry space.

A-SILICONE IMPRESSION MATERIAL

**A SMALL STEP FOR DENTISTS**  
A GREAT STEP FOR DENTISTRY

**PRESIDENT**

The Original

 **COLTENE**

# PRESIDENT

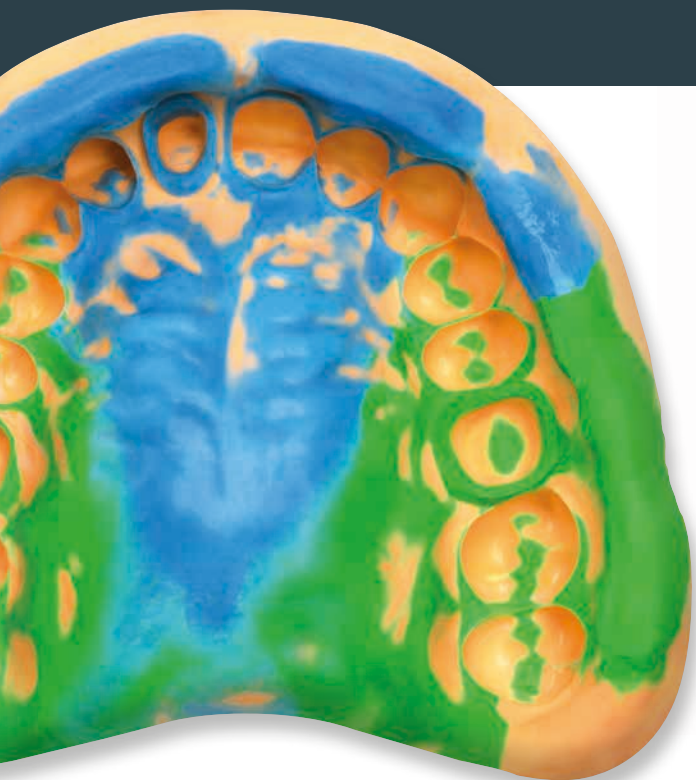
The Original

## A SMALL STEP FOR DENTISTS

A GREAT STEP FOR DENTISTRY

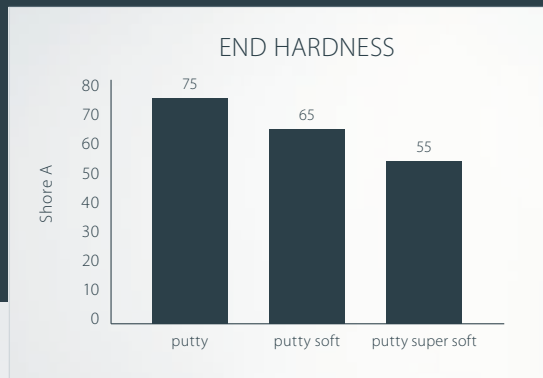
**THE INTRODUCTION OF PRESIDENT IN 1975 – THE FIRST A-SILICONE IN THE MARKET – IS CONSIDERED A MILESTONE IN THE DEVELOPMENT OF HIGH-PRECISION DENTAL IMPRESSION MATERIALS.**

With the use of polyvinylsiloxane (PVS) elastomers for the first time PRESIDENT users reached an unprecedented dimensional stability and precision, which today characterizes an A-Silicone. The PRESIDENT brand is still convincing as a traditional product line of COLTENE with its sovereign quality that has been continuously optimized.



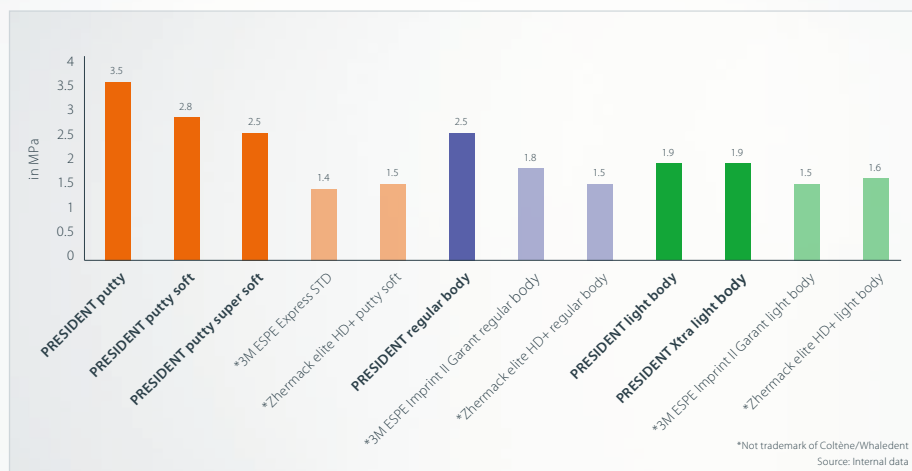
## PRESIDENT TRAY MATERIALS

PRESIDENT tray materials convince with high tear strength and elasticity. Due to flawless removal impressions are precise and succeed even under most difficult conditions. PRESIDENT heavy body and MonoBody are surface activated and thixotropic with fast pressure build up so that the wash material is easily driven into the clinically critical areas. PRESIDENT putties mix quickly and are offered in three different end hardnesses for each individual case.



## FIVE TRAY MATERIALS – YOUR CHOICE

The PRESIDENT portfolio contains three putty materials for various indications and preferences. You can choose between high, medium or low end hardness for the optimal stability and simple ease of cutting. Moreover PRESIDENT offers a high tear strength for great precision and dimensional stability.



## TEAR STRENGTH



# PRESIDENT

The Original

## PRESIDENT WASH MATERIALS

PRESIDENT wash materials are stable, yet extremely free-flowing under pressure to capture all marginal details precisely. The hydrophilic properties are effected by surfactants in the material. In contact with moisture these additives move to the surface and decrease the surface tension, resulting in an improved wettability.



Xtra light body



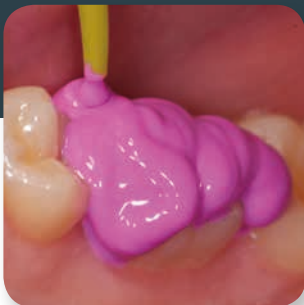
light body



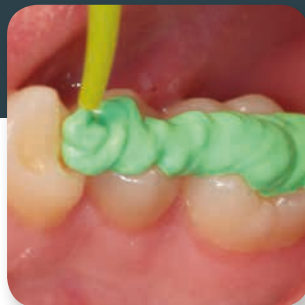
regular body

## THREE WASH MATERIALS – YOUR CHOICE

All PRESIDENT wash materials show perfect flowing behaviour in a wet environment. Select your favorite viscosity from low to high dependent on your needs.



Xtra light body

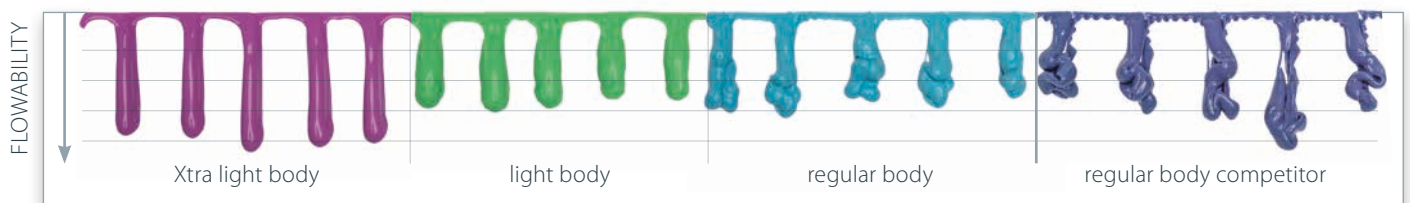


light body



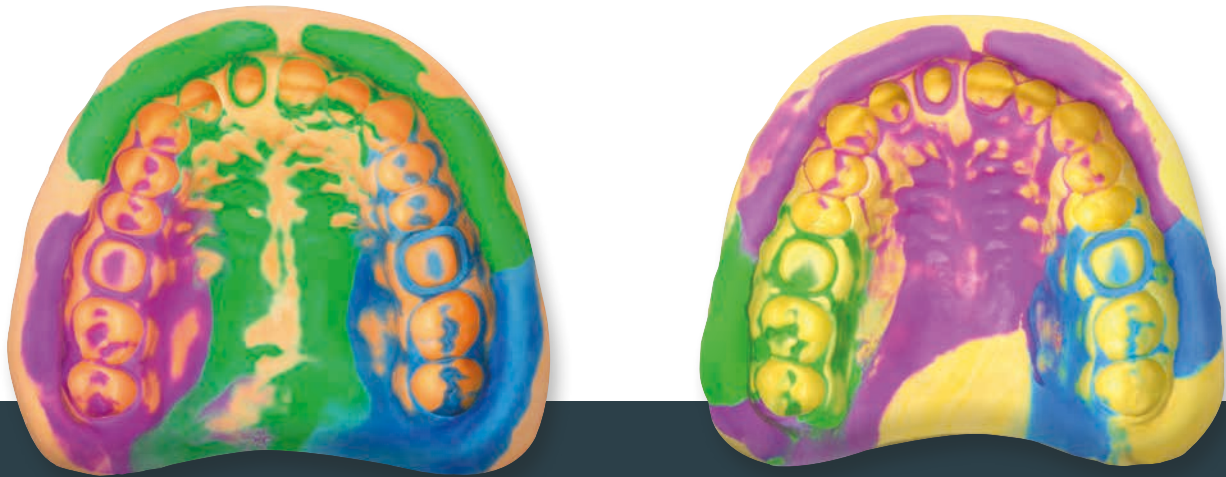
regular body

PRESIDENT wash materials show even leveling and thixotropy which results in accurate contours.



# PRESIDENT

The Original



## NEW COLORS

The new, fresh colors of the PRESIDENT line provide a better contrast between wash and tray material and thus show a more accurate detail readability.

		Flowability	Viscosity	End hardness	Tear strength	Elastic recovery
WASH	Xtra light body			50 Shore A	1.9 MPa	99.8 %
	light body			50 Shore A	1.9 MPa	99.8 %
	regular body			55 Shore A	2.5 MPa	99.8 %
	MonoBody			58 Shore A	3.0 MPa	99.7 %
	heavy body			63 Shore A	3.5 MPa	99.7 %
TRAY	putty super soft			55 Shore A	2.5 MPa	99.5 %
	putty soft			65 Shore A	2.8 MPa	99.4 %
	putty			75 Shore A	3.5 MPa	99.2 %

THE PRESIDENT PORTFOLIO AT A GLANCE

# PRESIDENT

The Original



## ORDER INFORMATION

### microSystem 25 ml

- 60019932** **PRESIDENT** The Original **Xtra light body**  
4 × 25 ml cartridge  
12 × Universal Mixing Tips
- 60019933** **PRESIDENT** The Original **light body**  
4 × 25 ml cartridge  
12 × Universal Mixing Tips
- 60019934** **PRESIDENT** The Original **light body**  
20 × 25 ml cartridge
- 60019935** **PRESIDENT** The Original **regular body**  
4 × 25 ml cartridge  
12 × Universal Mixing Tips
- 60019936** **PRESIDENT** The Original **regular body**  
20 × 25 ml cartridge

### 50 ml

- 60019937** **PRESIDENT** The Original **Xtra light body**  
2 × 50 ml cartridge  
12 × Universal Mixing Tips
- 60019938** **PRESIDENT** The Original **light body**  
2 × 50 ml cartridge  
12 × Universal Mixing Tips
- 60019939** **PRESIDENT** The Original **regular body**  
2 × 50 ml cartridge  
12 × Universal Mixing Tips
- 60019940** **PRESIDENT** The Original **heavy body**  
2 × 50 ml cartridge  
6 × Mixing Tip Turquoise

### 75 ml

- 60019941** **PRESIDENT** The Original **heavy body**  
2 × 75 ml cartridge  
8 × Mixing Tips Turquoise

### putty

- 60019942** **PRESIDENT** The Original **putty**  
2 × 300 ml, 2 × spoons
- 60019943** **PRESIDENT** The Original **putty soft**  
2 × 300 ml, 2 × spoons
- 60019944** **PRESIDENT** The Original **putty super soft**  
2 × 300 ml, 2 × spoons
- 60022166** **PRESIDENT** The Original **fast putty soft**  
2 × 300 ml, 2 × spoons

### System 360

- 60019945** **PRESIDENT** The Original **MonoBody Starter Kit**  
1 × 380 ml cartridge  
10 × Dynamic Mixing Tips  
1 × Fixation Ring
- 60019946** **PRESIDENT** The Original **MonoBody Refill**  
2 × 380 ml cartridge
- 60019947** **PRESIDENT** The Original **heavy body Starter Kit**  
1 × 380 ml cartridge  
10 × Dynamic Mixing Tips  
1 × Fixation Ring
- 60019948** **PRESIDENT** The Original **heavy body Refill**  
2 × 380 ml cartridge

### Tubes

- 60019949** **PRESIDENT** The Original **light body**  
1 × 53 ml Base  
1 × 53 ml Catalyst
- 60019950** **PRESIDENT** The Original **regular body**  
1 × 53 ml Base  
1 × 53 ml Catalyst

© 2017 Coltène/Whaledent AG - [www.coltene.com](http://www.coltene.com)

**Coltène/Whaledent Ltd.**  
The President Suite  
Kendal House, Victoria Way  
Burgess Hill, West Sussex  
RH15 9NF / UK  
T +44 1444 235486  
F +44 1444 870640  
[info.uk@coltene.com](mailto:info.uk@coltene.com)

**Coltène/Whaledent AG**  
Feldwiesenstrasse 20  
9450 Altstätten / Switzerland  
T +41 71 757 5300  
F +41 71 757 5301  
[info.ch@coltene.com](mailto:info.ch@coltene.com)

**Coltène/Whaledent Inc.**  
235 Ascot Parkway  
Cuyahoga Falls  
Ohio 44223/Estados Unidos  
T +1 330 916 8800  
F +1 330 916 7077  
[info.us@coltene.com](mailto:info.us@coltene.com)

 **COLTENE**