

YOUR COMPLETE RESTORATIVE SOLUTION



DERMADAM™

RUBBER DAM

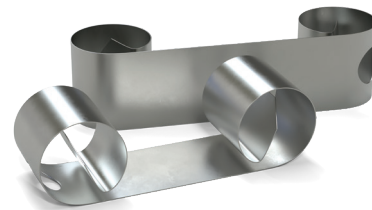
- Made from pure latex rubber
- Low dermatitis potential
- Strong and tear resistant
- Powder free to reduce allergic reactions



INTERGUARD™

INTERPROXIMAL TOOTH GUARD

- Reduces risk of iatrogenic damage by protecting adjacent teeth²⁻³
- Stable curls at end leave transition angles clear for full access
- Great for tunnel preparations and protecting adjacent teeth during air abrasion



UMBRELLA™

TONGUE, LIP, AND CHEEK RETRACTOR

The Umbrella retractor was developed to give you a clear treatment field while making patient comfort a top priority. See the benefits that go beyond a simple retraction of the soft tissues:

- Easy to place and disposable
- Innovative tongue-retraction design allows the tongue to comfortably rest behind the tongue guard, keeping it back and away from the working area
- Adapted for a variety of procedures like Class II restorations, sealants, ortho bonding, whitening, etc.
- Naturally and gently helps the patient hold their mouth open without pulling or stretching their lips



1. realityesthetics.com. 2. Lenters M, van Amerongen WE, Mandari GJ. Iatrogenic damage to the adjacent surfaces of primary molars, in three different ways of cavity preparation. *Eur Arch Paediatr Dent.* 2006;1(1):6-10. 3. de la Peña VA, García RP, García RP. Sectional matrix: Step-by-step directions for their clinical use. *Br Dent J.* 2016;220(1):11-14.

HALO™ SECTIONAL MATRIX SYSTEM

The Halo system produces anatomically shaped contours so you can spend less time shaping and finishing your restoration. And it provides consistently tight contacts, helping to ensure that your restoration will have the longevity both you and your patient expect.



Nitinol rings:

- Super-elastic nitinol metal maintains force during procedures and reduces cyclic fatigue
- Rings will last over 1000 uses
- Glass-filled nylon tines won't easily break, and won't collapse into the prep and create under contoured restorations
- Ring contours secure the band in a natural and anatomical shape, helping to eliminate flash and reducing the amount of finishing needed

Matrix Bands:

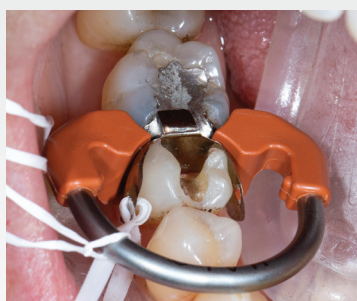
- Anatomically shaped for ideal contacts
- Curve at marginal ridge creates ideal occlusal embrasure, reducing finishing
- Tweezer holes for easy placement
- Bendable tab allows for easy placement and removal with increased visibility

Wedges:

- Firm wedge creates active wedging for enhanced separation, while being less traumatic to the papillae
- Hollow design makes wedges easy to place and allows wedges to be stacked when multiple wedges are needed
- Collapsible center for anatomical adaptation of the band



Pre-op



Preparation with Halo system



Post-op

ULTRA-ETCH™

ETCHANT

Ultra-Etch etchant features ideal viscosity which facilitates precise placement and superior control, but still allows it to penetrate into the smallest fissures or occlusal surfaces.

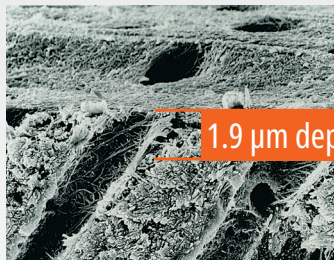
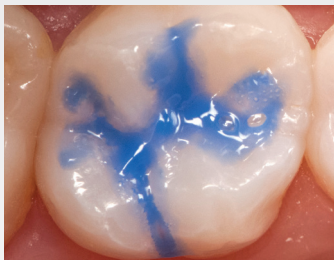
- Penetrates smallest fissures and won't run on a vertical surface
- Precise placement
- Rinses cleanly—leaves no residue
- Self-limiting on dentin. Lowers risk of over-etching¹

Ultra-Etch etchant is indicated for use on dentin and enamel to create optimal bonding surfaces. It can also be used to remove porcelain salts prior to silane or bonding agent.

Note: Do not use phosphoric etchant on metals or zirconia, as this will reduce bond strength.



"For a procedure as fine-tuned and finicky as adhesive bonding, Ultra-Etch offers me unparalleled control in an easy-to-extrude, non-drip yet easy to disperse formula that allows precise placement and coating of the substrate whether you are working with a total etch or selective etch technique. It is the benchmark phosphoric etch on the market." — Dr. Clarence Tam, New Zealand



Courtesy of Dr. Jaleena Jessop.

Ultra-Etch phosphoric acid is proven to be uniquely self-limiting in its depth of etch. Acids with greater depth of etch go beyond the optimum level and increase the potential for incomplete resin impregnation.

1. Perdigão J, Lambrechts P, Van Meerbeek B, and Vanherle G. A field emission SEM study of dentin etched with different phosphoric acid compositions and/or concentrations. Leuven, Belgium: Katholieke Universiteit te Leuven, 1994.

BOND

PEAK™ UNIVERSAL BOND ADHESIVE

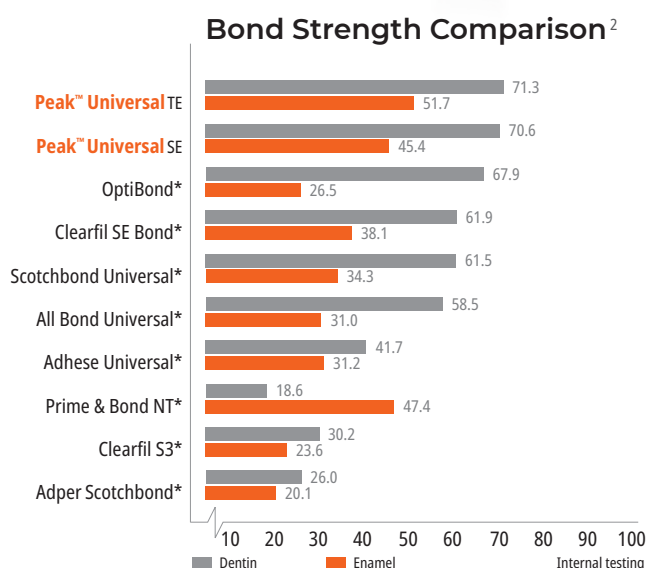
DYMETECH



Peak Universal Bond adhesive features Ultradent's Dymetech™ phosphate monomer blend for enhanced strength and greater versatility. With a 7.5% filler content, its viscosity has been optimized for minimal film thickness and superior strength. It bonds to dentin, enamel, porcelain, metal, composite, acrylic, and zirconia.

Contains chlorhexidine which is used to ensure long term bond strengths by preventing the degradation of collagen in the dentin or hybrid layer due to matrix metalloproteinases (MMP).¹

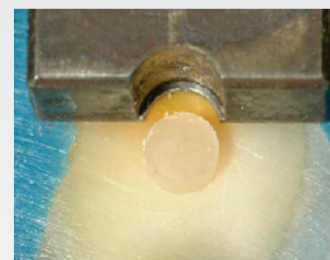
- Ideal for direct and indirect bonding, as well as post and core procedures
- Works with self-etch and total-etch techniques
- Available in syringe or bottle delivery



"Peak [Universal Bond adhesive] is an adhesive that is extremely simple to use and allows me to predictably and reliably perform my work with composite resins."
— Dr. Newton Fahl, Brazil



Dentin milled away leaving a protrusion for shear strength testing.



Shearing off a dentin protrusion is the best method for discovering true tooth strength.

Dentin has a shear strength between 70–100 megapascals (MPa). That is a high level for bonding agents to achieve, but Peak Universal Bond adhesive has done just that. Designed with a smart, custom-synthesized monomer blend called Dymetech, Peak Universal Bond adhesive is the only dental adhesive that has been shown to achieve bond strengths of 70 MPa or higher in our internal testing²— effectively re-creating the original strength of the tooth.

* Trademark of a company other than Ultradent Products, Inc. 1. Breschi, Lorenzo, et al. "Chlorhexidine stabilizes the adhesive interface: a 2-year in vitro study." Dental materials 26.4 (2010): 320-325. 2. Internal testing data. 3. realityratings.com

FORMA™

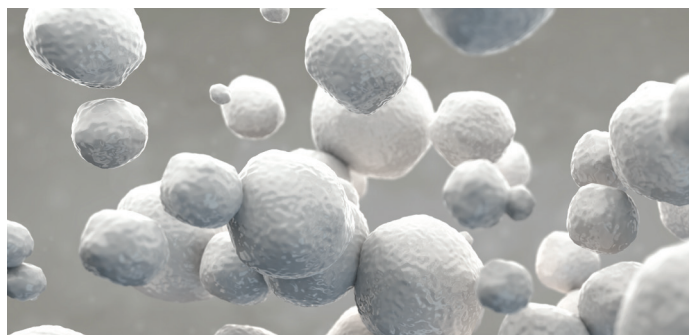
ZIRCONIA NANO-HYBRID COMPOSITE

FORMA composite offers natural tooth color with just one shade (OneStepColor). Each shade naturally mimics the tone and appearance of natural teeth. For restorations that require layering, FORMA composite offers colors of dentin, enamel, and effect shades with different degrees of translucency.

- Smooth and easy to sculpt
- Does not stick to instruments
- Won't slump out of place
- Ample working time
- Beautiful esthetics



Proprietary Zirconia Particle Technology



FORMA composite features a zirconia nano-hybrid formula that allows for an exceptionally durable restoration with better initial and retained gloss. The silanated zirconia particles in FORMA composite are rounded, giving a beautiful high gloss finish and enhanced durability to the restoration—making FORMA composite ideal for both anterior and posterior applications.



The patient desired to close this space and make some shape improvements in the incisors and canines.



After removing the previous restoration, a modified isolation with rubber dam and cords was done.



Palatal shell was reproduced using a silicon index incisal shade.



Deep dentin with a highly opaque A3D shade.



Superficial dentin with a body shade covering the whole bevel A1B shade.



Enamel shade with a bleach color XWE shade.



Jiffy™ polishing disks and the Jiffy Goat Hair Brush were used to give a final polish.



Final result.

UVENEER™ AND UVENEER™ EXTRA

DIRECT COMPOSITE TEMPLATE SYSTEM

The unique, minimally invasive Uveneer direct composite template system creates beautiful direct composite veneers with predictable shape and symmetry. It is designed to create high-quality, natural-looking anterior restorations in one visit. It can also be used for cosmetic mock-ups and shade selection as well as provisionals during porcelain veneer creation.

- Allows for predictable, high-quality, natural-looking composite restorations
- Prevents the oxygen inhibition layer during curing, resulting in a hard, glossy surface
- Allows light to pass through the template to the composite for effective curing
- Works with any preferred composite
- Releases easily from cured composite resin



Courtesy of Dr. Rafael Beolchi.

Heavy bruxist patient with worn out dentition and several old and failing composite restorations. Dentin layers were applied to the teeth freehand and the enamel layer was applied with the Uveneer Extra template system.



Courtesy of Dr. Sigal Jacobson.

This patient was embarrassed of his teeth and disliked using a removable partial denture, or flipper. He had this to say about the restorative work done using Uveneer templates: "I'm very pleased with the results and can't tell you how much I do not miss wearing a flipper. I'm smiling much wider these days and thankful that a procedure like this can give me (or anyone in this position) some time to figure out the ideal and permanent solution [for] a smile."

VIT-L-ESCENCE™

ESTHETIC RESTORATIVE MATERIAL

Vit-l-escence esthetic restorative material is a composite system that features the fluorescent and opalescent qualities of natural tooth structure. Vit-l-escence esthetic restorative material is ideal for creating artistic anterior composite restorations, including direct veneers. Its strength and wear resistance also make it perfect for posterior restorations.

- Effortlessly blends with natural dentin and enamel
- Intended for anterior and posterior restorations
- Is both creamy and sculptable
- Polishes beautifully



Courtesy of Dr. Nasser Barghi.



Vit-l-escence Composite Porcelain

Vit-l-escence material can be even more translucent than porcelain.

Courtesy of Dr. Jaleena Jessop.



Before.



After.

Patient had some existing composite removed and underlying dentition was whitened. Once she felt good about the shade, all remaining composite was removed. Surfaces were minimally roughened to preserve as much dentition as possible, with the exception of #7, where we reduced the mesial corner slightly due to the rotation. Cord was packed along gingiva to ensure a smooth and sealed transition to the tooth. Products used were Ultra-Etch etchant, Peak Universal Bond adhesive, A2 PermaFlo flowable composite, and OW and OS Vit-l-escence esthetic restorative material. Patient's canines took a bit longer to whiten so before the Class Vs were completed on #6 and #11, a whitening tray was made with reservoirs for those teeth only. Patient continued to whiten for two weeks. Patient returned one week after completing whitening, and the canine teeth were restored with the same shades and procedures.

1. realityesthetics.com.

MOSAIC™

UNIVERSAL COMPOSITE

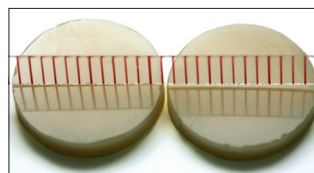


Mosaic universal composite balances beauty and performance for lasting, lifelike results. It can be used for all restorative purposes: basic or complex. The exceptional handling, natural esthetics, and high durability of Mosaic composite enable clinicians to create restorations of the highest quality.

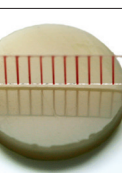
- Smooth, pliable consistency
- Cuts easily and doesn't stick to instruments
- Won't flow or slump out of place after being shaped
- Allows ample working time under ambient light



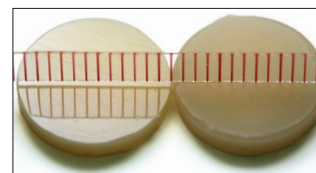
Highly sculptable handling properties provide total control during manipulation.



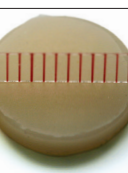
Mosaic composite polished before brushing



Mosaic composite after 10,000 brush cycles



Competitor composite polished before brushing



Competitor composite after 10,000 brush cycles



1. Patient with fractured central incisor.



2. A polarized picture is used to outline opacities and translucencies.



4. The palatal and incisal portions of the tooth can be molded using a palatal silicone matrix.



5. Note the two shades of the palatal shell chosen (Enamel Trans and A2) for their different levels of opacity.



3. Composite shades are chosen; the tooth is prepared after placement of rubber dam isolation.



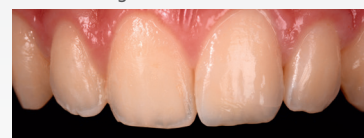
6. A more opaque and high value shade is added mesially (Opaque White) in order to raise value and hide the background.



7. The dentinal opaque core body is modeled (A3) according to the polarized picture information.



8. The outer layer is formed using a translucent shade (ET) and finishing and polishing are performed.



9. Final result after rehydration.

VALO™ GRAND

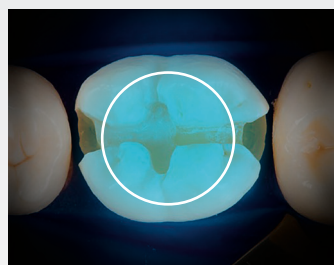
CURING LIGHT

The VALO Grand curing light features a 12 mm lens with ultra-high-energy broadband LEDs to cure any dental material. The optimally collimated beam delivers consistent, uniform power to prevent hot or cold spots. Three curing modes—Standard Power, High Power Plus, and Xtra Power—accommodate your preferences. The extremely durable, slim, ergonomic shape allows unprecedented access to all restoration sites.

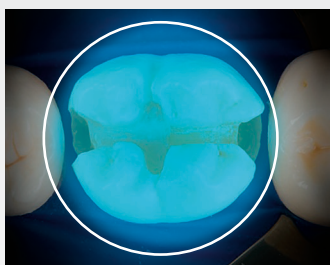
- Curing button on the underside for intuitive operation
- Unibody construction yields a durable, slim, ergonomic shape and allows unprecedented access to all restoration sites
- Highly efficient LEDs keep the wand body cool to the touch
- Battery-operated, cordless wand design provides optimal convenience and flexibility



*Trademark of a company other than Ultradent Products, Inc.



Average competitor surface area
46 mm²



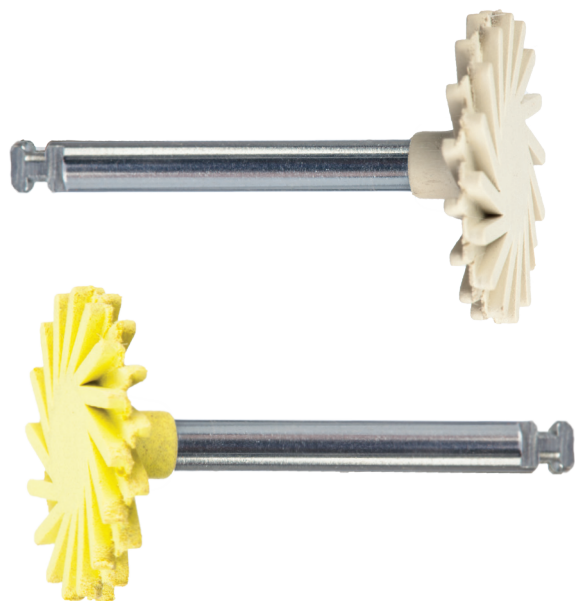
VALO Grand curing light surface area
107 mm²

50%
Bigger Lens
(12 mm)



FINISH

JIFFY™ NATURAL COMPOSITE SYSTEM



The Jiffy Natural composite finishing and polishing system consists of malleable spiral-shaped wheels that are designed to easily conform to all tooth surfaces.

- Easily re-creates the luster of natural enamel
- Specially formulated Ultradent diamond grit gives a beautiful finish on any composite material
- Available with or without autoclavable aluminum blocks*
- Quick and easy 2 step polishing



*Ultradent recommends the use of an aluminum block when autoclaving to prevent warping and deformation.

WARNING: Do not use Jiffy Natural polishing wheels to polish the labial surface near the gingival line. This can tear the gingiva.

Recommended speed: 5,000–8,000 RPM



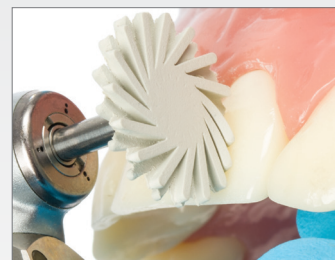
Jiffy Natural Medium Yellow wheels polish all areas except near the gingiva, where a Jiffy Medium cup should be used.



Recommended speed: 5,000–8,000 RPM



Use Jiffy Fine White Natural wheels to create final polish on all areas except near the gingiva, where a Jiffy Fine White Polishing cup should be used.



FINISH

PERMASEAL™ PENETRATING COMPOSITE SEALER

- Bonds to composite and etched enamel
- Seals microcracks
- Protects and revitalizes composite restorations



Surfaces and margins that will be sealed should be cleaned with Consepsis™ Scrub slurry, a micro etcher, or freshened with a bur and rinsed thoroughly. Etch the enamel immediately adjacent to the restoration and all composite surfaces for 15 seconds. If the enamel is not prepared as described above, etch for 30 seconds. Rinse thoroughly and air dry.



Four-year-old restoration following PermaSeal composite sealer treatment.

ULTRADENT™ DIAMOND POLISH MINT

- High-grade white microcrystalline diamond particles
- Unsurpassed esthetic polish
- Ideal for porcelain or composite restorations
- Use with Jiffy™ Goat Hair Brush
- Available in 2 grits (0.5 µm and 1.0 µm)



Use Ultradent Diamond Polish Mint with Jiffy Goat Hair Brushes.



COMPOSITE WETTING RESIN

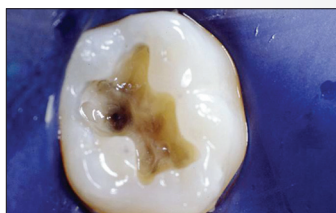
- Facilitates composite adaptation
- Moistens dry composite during contouring
- Hydrophobic and solvent-free resin

"I use Composite Wetting Resin instead of a bonding agent to facilitate adaptation of composite. Bonding agents often contain acetone or alcohol that can cause the resins and fillers in the composite to separate, which weakens the surface of the restoration. They also may change the composites shade after curing." — Dr. Jaimeé Morgan

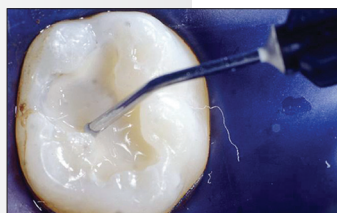


PERMAFLO™ FLOWABLE COMPOSITE

- High-fill, high-flow formula
- Highly radiopaque
- Fluoride-releasing formulation
- Superior polishability
- Strong and wear resistant
- Available in 8 shades



1. Amalgam-tattooed hard dentin is easily concealed using PermaFlo flowable composite as the super-adaptive initial layer.



2. To avoid amalgam show-through, use one or two layers of PermaFlo composite Dentin Opaquer shade, followed by a layer of composite—we recommend Vit-I-escence™ esthetic restorative material.



3. With PermaFlo flowable composite as the initial layer, you get better long-term results with total masking of dark colors and no voids.



YOUR COMPLETE —
RESTORATIVE
SOLUTION —

Ultradent has a complete line of restorative products that help you create beautiful quality restorations every time.

»» ultradent.com/restorative