

Filtek™ Supreme XTE

Universal Restorative



Versatile shading solutions
with beautiful results

Simple to use

- Exceptional handling
- More body shades for single-shade restorations
- Bold, easy-to-read, color-coded labels

Lifelike aesthetics

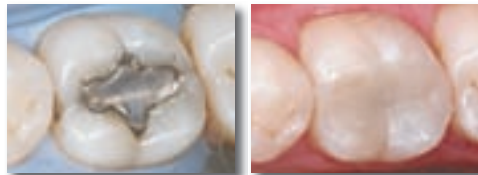
- Excellent polish
- Wide range of shades and opacities
- Improved fluorescence

Unique nanofiller technology

- Better polish retention than a microfill
- Wears better than leading competitors
- Outstanding strength for anterior and posterior use

Simplicity

If you prefer the simplicity of a single-shade technique, you'll find the improved polish retention and fluorescence of Filtek™ Supreme XTE Universal Restorative make it easier to create natural-looking restorations. Plus, we've expanded the range of Body shades to give you more options for an ideal single-shade match.



Amalgam filling replaced by Filtek™ Supreme XTE Universal Restorative in a posterior restoration, creating a strong, aesthetic outcome.

Photo courtesy of Dr. Grant Chyz.

Versatility

If you prefer using a dual-shade or multi-shade technique, you'll find our full palette of shades is now easier to use. Syringes and capsule bottle labels are color-coded by opacity, and bold lettering saves time in finding selected shades.

Science

3M ESPE's "true" nanotechnology contributes to excellent handling, wear-resistance and remarkable polish. Key improvements include:

- The restorative is now easier to polish and offers better polish retention than a microfill.
- Our Translucent shades have the same nonsticky, great paste handling as the other opacities – and are also available in capsules.



Tetric EvoCeram®

Filtek™ Supreme XTE
Universal Restorative
Body shade

Filtek™ Supreme XTE
Universal Restorative
Translucent shade

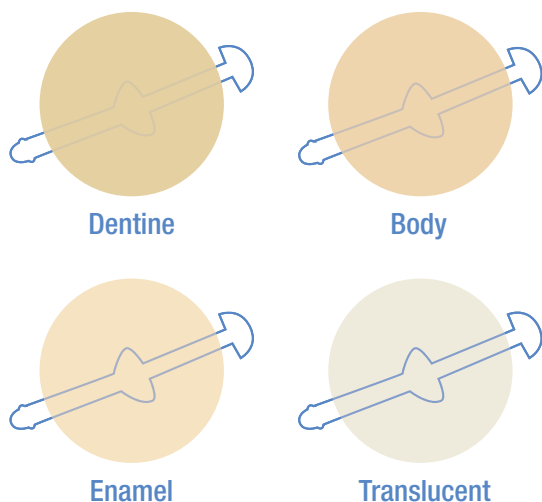
Polish that lasts. This side-by-side photo compares the polish retention of a leading restorative to that of Filtek™ Supreme XTE Universal Restorative after 6,000 cycles of simulated toothbrushing.

Source: 3M ESPE in vitro internal data

Ordering Information

Item No.	Product Information
4911S	Filtek™ Supreme XTE Universal Restorative Single Shade Introductory Kit – Capsule Kit includes: 40 – 0.2 g capsules: 20 each of Body shades A2 and A3; Technique Guide; Instructions for Use
4910S	Filtek™ Supreme XTE Universal Restorative Single Shade Introductory Kit – Syringe Kit includes: 4 – 3 g syringes: 2 each of Body shades A2 and A3; Technique Guide; Instructions for Use
4911D	Filtek™ Supreme XTE Universal Restorative Dual Shade Introductory Kit – Capsule Kit includes: 40 – 0.2 g capsules: 10 each of Dentine shades A3, A4, and Enamel shades A2, A3; 1 Shade Selector Wheel; Technique Guide; Instructions for Use
4910D	Filtek™ Supreme XTE Universal Restorative Dual Shade Introductory Kit – Syringe Kit includes: 4 – 3 g syringes: 1 each of Dentine shades A3, A4, and Enamel shades A2, A3; 1 Shade Selector Wheel; Technique Guide; Instructions for Use
4911P	Filtek™ Supreme XTE Universal Restorative Professional Kit – Capsule Kit includes: 160 – 0.2 g capsules in plastic reusable case: 10 each of Dentine shades: A2, A3, A4 20 each of Body shades: A2, A3, A3.5, A4 10 each of Enamel shades: A1, A2, A3, W 10 each of Translucent shades: AT 1 Shade Selector Wheel; Technique Guide; Instructions for Use
4910P	Filtek™ Supreme XTE Universal Restorative Professional Kit – Syringe Kit includes: 12 – 3 g syringes each of shades: Dentine shades: A2, A3, A4 Body shades: A2, A3, A3.5, A4 Enamel shades: A1, A2, A3, W Translucent shades: AT 1 Shade Selector Wheel; Technique Guide; Instructions for Use

Opacities: Dentine, Body, Enamel and Translucent designations refer to differences in opacity.



Refills

Dentine shades	Syringe	Capsule
A1D	4910A1D	4911A1D
A2D	4910A2D	4911A2D
A3D	4910A3D	4911A3D
A4D	4910A4D	4911A4D
B3D	4910B3D	4911B3D
C4D	4910C4D	4911C4D
White	4910WD	4911WD
Body shades	Syringe	Capsule
A1B	4910A1B	4911A1B
A2B	4910A2B	4911A2B
A3B	4910A3B	4911A3B
A3.5B	4910A3.5B	4911A3.5B
A4B	4910A4B	4911A4B
A6B	4910A6B	4911A6B
B1B	4910B1B	4911B1B
B2B	4910B2B	4911B2B
B3B	4910B3B	4911B3B
B5B	4910B5B	4911B5B
C1B	4910C1B	4911C1B
C2B	4910C2B	4911C2B
C3B	4910C3B	4911C3B
D2B	4910D2B	4911D2B
D3B	4910D3B	4911D3B
White	4910WB	4911WB
Extra White	4910XWB	4911XWB
Enamel shades	Syringe	Capsule
A1E	4910A1E	4911A1E
A2E	4910A2E	4911A2E
A3E	4910A3E	4911A3E
B1E	4910B1E	4911B1E
B2E	4910B2E	4911B2E
D2E	4910D2E	4911D2E
White	4910WE	4911WE
Extra White	4910XWE	4911XWE
Translucent shades	Syringe	NEW! Capsule
Clear	4910CT	4911CT
Blue	4910BT	4911BT
Grey	4910GT	4911GT
Amber	4910BT	4911AT

Syringe shade refills include 1 – 3 g syringe; **Capsule shade refills:** Dentine, Enamel and Translucent Shade Refills include 10 – 0.2 g capsules; Body Shade Refills include 20 – 0.2 g capsules; Instructions for Use.

3M ESPE

3M ESPE AG
ESPE Platz
82229 Seefeld · Germany
E-Mail: info3mespe@mmm.com
Internet: www.3mespe.com

You + 3M ESPE =
New ideas for dentistry

3M, ESPE and Filtek are trademarks of 3M or 3M ESPE AG.

Tetric EvoCeram is not a trademark of 3M or 3M ESPE AG.

©3M 2009. All rights reserved.

01 (12.2009)