



**+**  
**WE  
KNOW  
ENDO.**

**MAILLEFER**

Conform Fit™ Gutta-Percha

The right fit and flow you can feel

---

 **Dentsply  
Sirona**



# Next-generation gutta-percha. Made possible by Conform Fit™ technology.

Gutta-percha master cones should ideally fit the shapes created by your files. Yet, traditional hand-rolled gutta-percha points have made it hard to achieve a precise match. The next level of precision performance is here — gutta-percha master cones with Conform Fit technology.



**The right fit you can feel.** Variable tapered cones provide a snug fit that reaches the apex for the right tug back.



**Improved flow to the end.** Conform Fit gutta-percha has a better flow and transfers heat up to 5 mm beyond the heat source.



**Enhanced patient safety.** Master cones are not made with natural rubber latex.



**The simplicity of a total solution.** Precision-matched shapes and sizes remove the guesswork.



**Can be used at lower working temperature.** Lower temperatures reduce the risk of harm to the periodontal ligament (PDL).

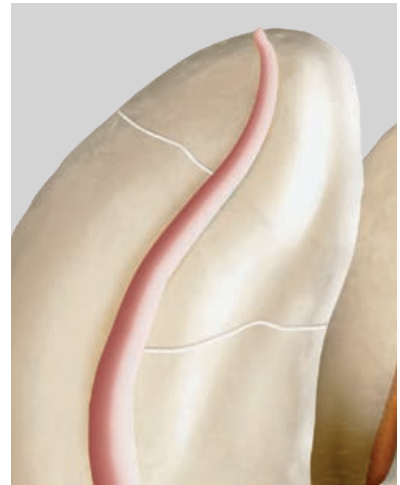


**Convenient tab** and color markings for easy identification.



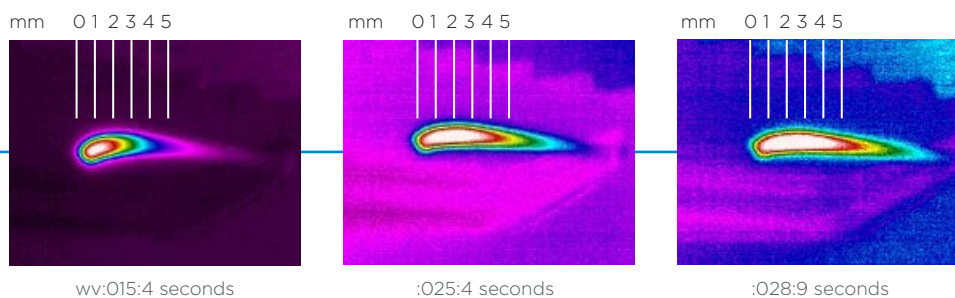
## The right fit you can feel

You need a consistent and confident cone fit. But finding the right tug back with hand-rolled gutta-percha points can be tough. Traditional gutta-percha may seem to fit but can actually be loose at the apex. Conform Fit™ gutta-percha cones feature a variable taper with a 40% more consistent shape than traditional gutta-percha. This creates a snug apical fit and an accurate tug back that you can feel.



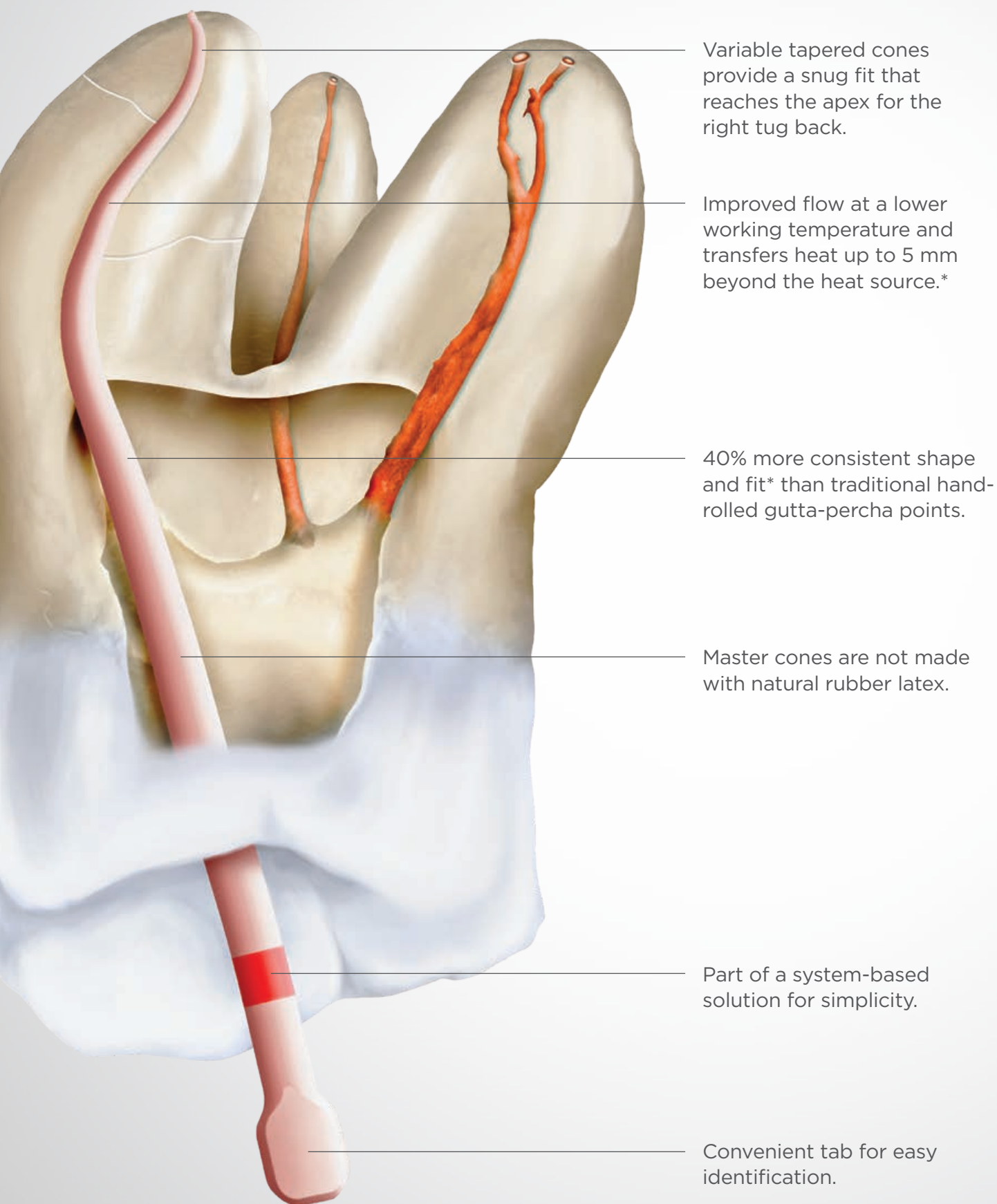
## Improved flow to the end

The unique gutta-percha formulation heats more consistently for better flow and allows deeper thermal penetration into the material. Heat transfers through the master cone up to 5 mm beyond the heat source—so you can be sure you have warm, flowable gutta-percha all the way to the apex. This enables the clinician to utilize a lower heat plugger temperature, thereby improving patient safety and achieving a complete fill.



*\*Source: Internal testing. Data available.*





\*Source: Internal testing. Data available.



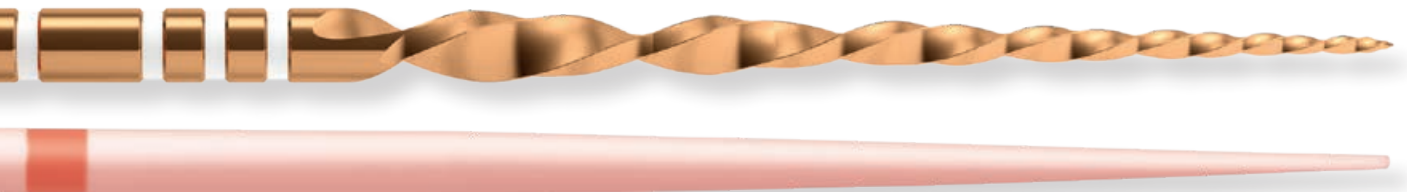
## Enhanced patient safety

Conform Fit™ gutta-percha is not made with natural rubber latex. Our advanced formulation can be used at a lower working temperature, reducing the risk of harm to the periodontal ligament (PDL), which can be damaged by higher heat.



## The simplicity of a total solution

Gutta-percha master cones with Conform Fit technology are part of a total system solution that takes the guesswork out of achieving a precise fit. Use them with corresponding files, gutta-percha points and paper points with confidence. The innovative tab design simplifies identification.





# Part of a total system solution

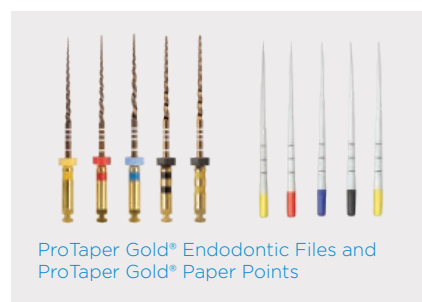
## WaveOne® Gold Conform Fit™ Gutta-Percha

Color	Size	Pack	Item #
Yellow	Small	60-pack	B00WGGPF00SML
Red	Primary	60-pack	B00WGGPF00PRI
Green	Medium	60-pack	B00WGGPF00MED
White	Large	60-pack	B00WGGPF00LRG
Assorted	S/P/M/L	60-pack	B00WGGPF00AST



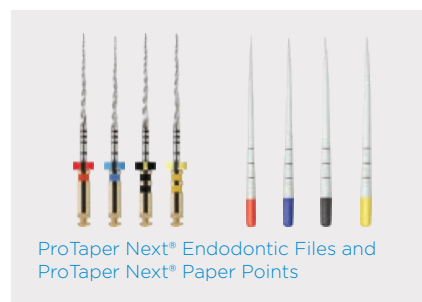
## ProTaper Gold® Conform Fit™ Gutta-Percha

Color	Size	Pack	Item #
Yellow	F1	60-pack	B00PGGPF000F1
Red	F2	60-pack	B00PGGPF000F2
Blue	F3	60-pack	B00PGGPF000F3
Assorted	F2/F3	60-pack	B00PGGPF00F23
Assorted	F4/F5	60-pack	B00PGGPF00F45



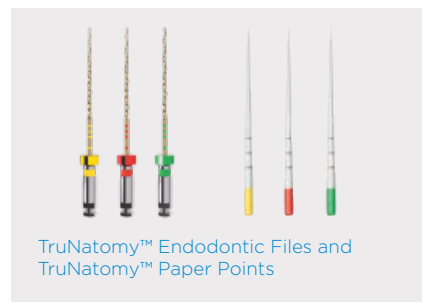
## ProTaper Next® Conform Fit™ Gutta-Percha

Color	Size	Pack	Item #
Red	X2	60-pack	B00PNGPF000X2
Blue	X3	60-pack	B00PNGPF000X3
Assorted	X2/X3	60-pack	B00PNGPF00X23
Assorted	X4/X5	60-pack	B00PNGPF00X45



## TruNatomy™ Conform Fit™ Gutta-Percha

Color	Size	Pack	Item #
Yellow	Small	60-pack	B00TNGPF00SML
Red	Prime	60-pack	B00TNGPF00PRM
Green	Medium	60-pack	B00TNGPF00MED
Assorted	S/P/M	60-pack	B00TNGPF00AST



Maillefer Instruments Holding Sàrl  
Chemin du Verger 3  
CH-1338 Ballaigues  
Switzerland  
Made in the USA  
dentsplysirona.com  
All images are the property of Dentsply Sirona, Inc. unless otherwise noted.

