

J-Temp™

TEMPORARY RESIN

STEP-BY-STEP



See instructions for use

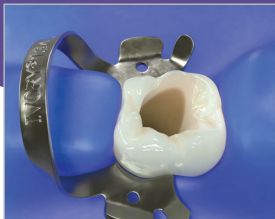
U2
ULTRADENT

INDICATIONS FOR USE

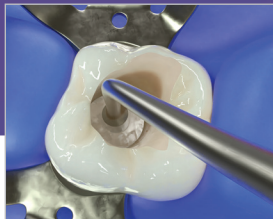


- Temporary restorations (endodontics, inlay/onlay, cusp buildup)
- Splinting between multiple implant copings for impressions to resist impression material distortion
- To provide structure for isolation clamping and to act as a barrier for endodontic irrigants
- Bite ramps and temporary occlusal buildups during orthodontics

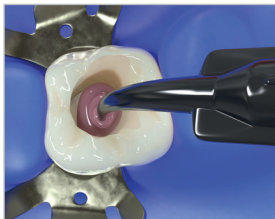
TEMPORARY RESTORATION: ENDODONTICS



1. Prepare root canal system



2. Insert cotton pellet (or other barrier) and pack to protect the root canal entrance



3. Apply J-Temp™ temporary resin incrementally in 2-3 mm layers

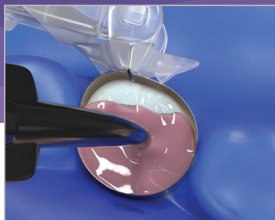


4. Light cure in-between layers and use burs to adjust occlusion

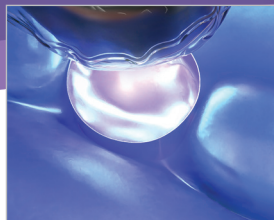
TEMPORARY RESTORATION: INLAY AND ONLAY



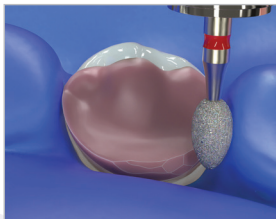
1. After preparation, place matrix band



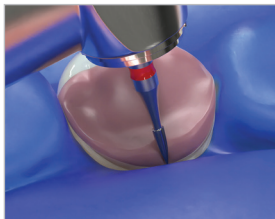
2. Apply J-Temp™ temporary resin incrementally in 2-3 mm layers



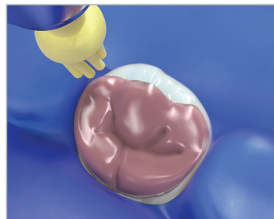
3. Light cure in-between layers



4. Remove the matrix band and begin shaping

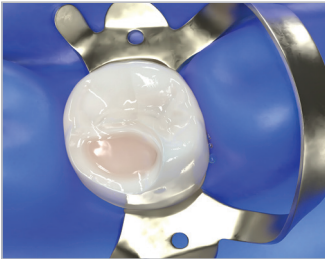


5. Use burs to adjust occlusion

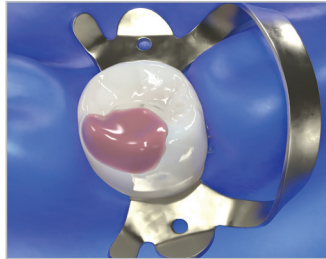


6. Polish and check occlusion

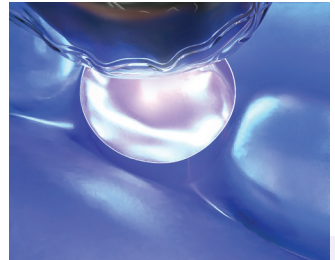
TEMPORARY RESTORATION: TOOTH BUILDUP



1. Apply J-Temp™ temporary resin to restore missing tooth structure



2. Apply J-Temp™ temporary resin incrementally in 2-3 mm layers



3. Light cure in-between layers

BITE RAMPS AND TEMPORARY OCCLUSAL BUILDUPS DURING ORTHODONTICS



1. Etch occlusal or lingual tooth surface



2. Rinse



3. Apply adhesive and air thin

CONTINUED



4. Light cure



5. Apply J-Temp™ temporary resin incrementally in 2-3 mm layers



6. Light cure in-between layers



7. Using a dental bur, adjust to desired height and shape

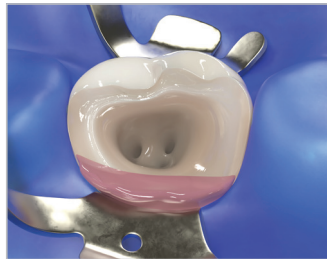
TO PROVIDE STRUCTURE FOR ISOLATION CLAMPING AND TO ACT AS A BARRIER FOR ENDODONTIC IRRIGANTS



1. Rubber dam cannot be applied due to insufficient tooth structure



2. Replace missing tooth structure by placing J-Temp™ temporary resin in 2–3 mm layers and light cure in-between layers



3. Rubber dam can now be securely placed to provide a barrier for irrigants

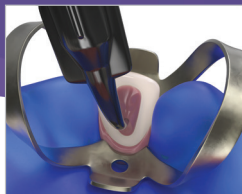
WALKING BLEACH TECHNIQUE



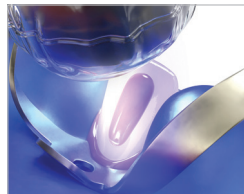
1. Evaluate, prepare, and seal pulp chamber



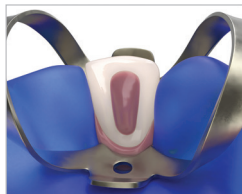
2. Fill pulp chamber with whitening gel, leaving 3–5 mm of space for J-Temp™ temporary resin



3. Apply J-Temp™ temporary resin incrementally in 2–3 mm layers



4. Light cure in-between layers



5. J-Temp™ temporary resin can be removed and replaced for each additional whitening appointment

NOTE: Ensure to not displace the whitening gel onto the margins as this may compromise the temporary seal.

SPLINTING BETWEEN MULTIPLE IMPLANT COPINGS FOR IMPRESSIONS TO RESIST IMPRESSION MATERIAL DISTORTION



1. Secure floss between implant copings (optional)



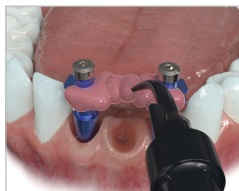
2. Place J-Temp™ temporary resin in 2-3 mm increments



3. Alternate sides, working towards the middle



4. Light cure in-between each increment



5. Final increment connecting the two sides should be as small as possible to minimize shrinkage

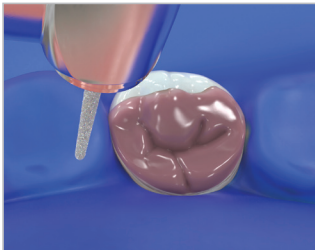


6. Light cure final increment



7. Ready for impression

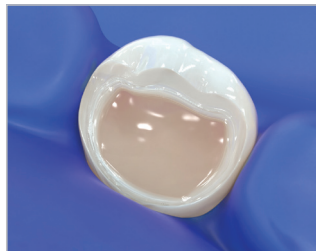
REMOVING J-TEMP™ TEMPORARY RESIN



1. Remove the bulk of J-Temp™ temporary resin with a standard bur



2. Final thin layer of J-Temp™ temporary resin can be removed with a hand instrument or low speed bur



3. J-Temp™ temporary resin will be completely removed when all colored resin is gone

THANK YOU FOR CHOOSING

J-Temp™

TEMPORARY RESIN



800.552.5512 | [ULTRADENT.COM](https://www.ultradent.com)

© 2022 Ultradent Products, Inc. All rights reserved. 1011486AR01 091222

